

S.I.A.V.



It.V.A.S.

Società Italiana  
Agopuntura Veterinaria

Italian Veterinary  
Acupuncture Society

# CHROMO ACUPUNCTURE

**Pozzi Roberta Dvm , Cassis Chiara Dvm**

**Dott. Pozzi Roberta DVM**

**Exspert in Veterinary Acupuncture and Shiatsu , Master II Level "Veterinary Sport Physiology and Physiotherapy for Small Animals"**

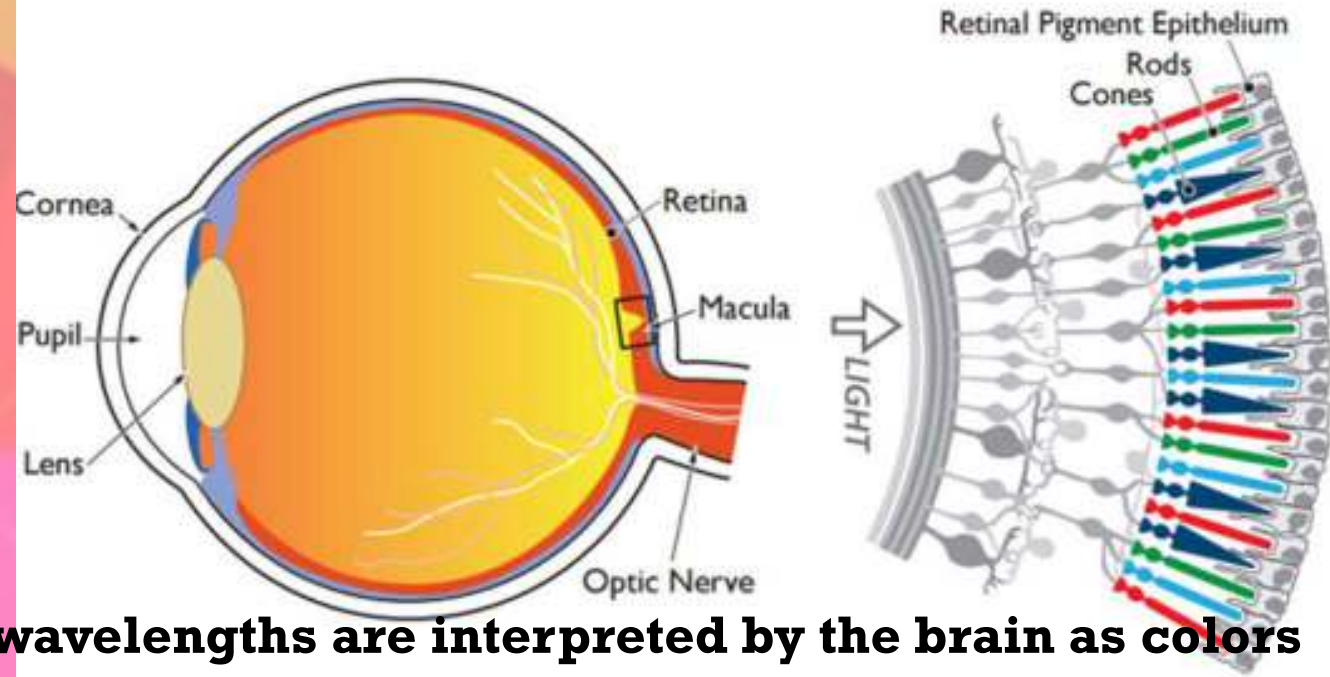
**[robvet.pozzi@gmail.com](mailto:robvet.pozzi@gmail.com) [www.robertapozzi.com](http://www.robertapozzi.com)**





# CHROMO ACUPUNCTURE

- Since ancient times color was an important element in human life.
- The use of color is influenced by the context of life, it has a cultural, emotional and symbolic significance.
- It has been used for religious purposes, magical, therapeutic and artistic.
- The color comes from light
- NO light NO color



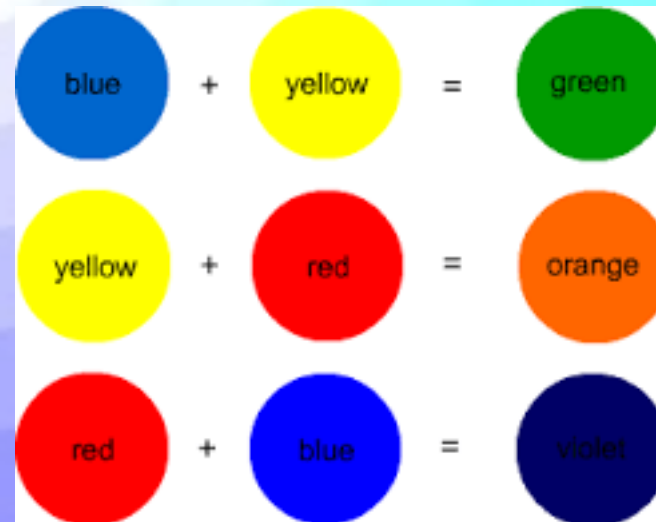
## Close-up of the Retina



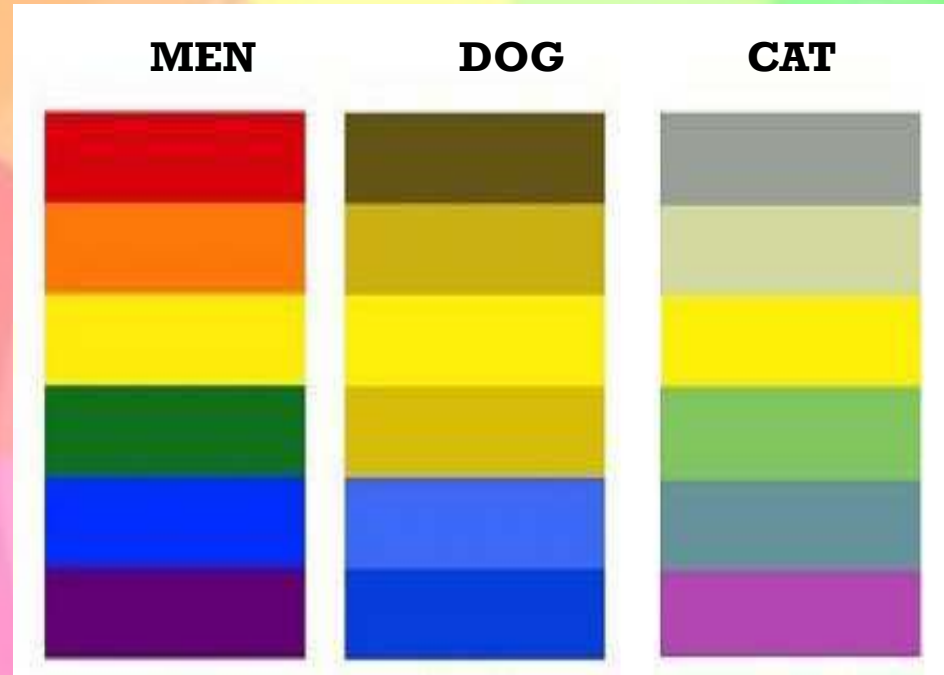
-  **The different wavelengths are interpreted by the brain as colors**
-  **the luminous radiation coming to our eyes are encoded by the retinal**
-  **photoreceptors: rods (sensitive to the light intensity) and cones (to the light color)**
-  **We have three kind of cones sensible for the red green and blue light respectively**



- **Colors are primary and complementary**
- **Goethe determined that there are three pure colors (red, yellow and blue), by the admixture of which all others flow.**
- **Mixing these colors together you get the secondary colors of the first order:**
  - **red and yellow become orange**
  - **yellow and blue to green**
  - **blue and red to purple.**



**Animals have more rods than cones compared humans; they can see in the dark, but can't see the same range of color that human can**



**Dogs sees blue, violet and yellow distinctly, but recognizes from red to orange to green shades like different from white, but confused it with yellow. They do not see other colors.**

**Cat, however, sees blue violet yellow and green distinctly, but no red. The reason is that in the natural world the prey's mantle could be grey, brown and beige.**



**Is Peter Mandel, is the creator of Chromo Acupuncture, which transfers the treatment with the color on Chinese meridian systems. In the early 1970s, Mandel started study Kirlian effect to demonstrate chromo acupuncture.**

**This method is called  
EEAT (energy emission analysis terminals) or in  
internationally:  
EEA energetic emission analysis**

**Scientist A.Popp which demonstrates that the cell (the DNA in a replication phases) emits biophotons. It is very weak electromagnetic emissions; messages are sent and received from the cells and they are decoded into biological signals, this transmission takes place by Resonance. At this point we can say that stimulating the acupuncture points with colored light beams allows you to edit a disharmonious energy structure: the Acupoints are the gate of the meridians where the color could be let in to harmonize them.**

[www.robertapozzi.com](http://www.robertapozzi.com)



# DISEASE:

- Pain arthrosis, back problem
- Balance the entire endocrine system
- Regulate sleep –wake cycles, hunger-thirst
- Immune system
- Reduce stress
- Allergy Dermatitis
- Anxiety
- Prevention than therapeutic



# TOOL

- In chromo acupuncture we used a special torch with chromatics lens that selects the light colors. There are seven crystal tips for each colors. Some pens have the possibility to change frequency to treat the points
- Normally is radiating from 30 second to one minutes for each point one a day, every day or more until one a week.



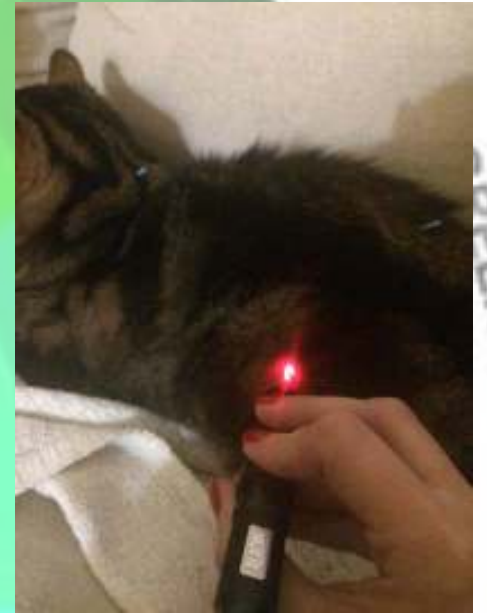
# HOW TO USE THE COLOR

- **In TCVM we associate one color to each element**
- Red: Fire movement color, Heart and small intestine, pericardium and San Jiao, fire-heat energy. Language (in the sense of the ability to speak). Blood vessels.
- White: Metal movement color Lung and Large Intestine. Energy dryness, nose, skin
- Yellow: Earth movement Spleen / Pancreas and Stomach. Energy humidity. Mouth. Muscles.
- Black / Blue: Water movement Kidney and Bladder. Cold energy. Sensory organs and ears (hearing) in particular. Bones.
- Green: Wood movement Liver and Gall Bladder. Wind energy. Eyes. Tendons.



# THE COLOR CHARACTERISTICS ACCORDING TO MANDEL

- Red is the color with the highest penetration and is used in circulatory disorders. It stimulates in case of chronic diseases.
- Blue is a cold color. This color infuses calmness and is used in all situations of acute inflammation.
- Yellow is a warm color, used in all diseases of the digestive tract. Brings serenity.
- Green is a neutral color. It is a sedative color, calm, relax.
- Orange: used in cases of psychosis and melancholia, helpful to find energy and joy.
- Violet: it strengthens meditation and is considered the color of inspiration.
- Turquoise: used for stiffness and stagnation of the subconscious, it guarantees serenity and well-being.



# THE COLOR CHARACTERISTICS ACCORDING C. DISTANISLAO, M. CORRADIN, F. BONANOMI (ITALIANS' DOCTORS)

- Red: very hot energy, is Fire increase blood pressure, chronic diseases, working on muscles, healing, for Shen, is a Physical Energy
- Orange: hot energy. is worming, stimulation thyroid, antispasmodic, used instead red for a light stimulation.
- Yellow: warm energy, rationality, impulse is not continuous, for sport animals because increase muscle tone, quick reflexes. Is a strong stimulator of well-being, happiness.
- Green: neutral color, is balance, hope, restored property, increase vitality. For stress, anxiety, hyperactivity, insomnia, psychosomatic gastrointestinal disease. Sedative nervous system.
- Turquoise: is a cold color, is a calm and peace color. Invigorate parasympathetic nervous system, reduce blood pressure, for tachycardia and palpitation. Good for joint pain and fever. Used for induce a relax.
- Blue: is a cold and cosmic color. Used for sensory organs like nose, eyes. It stimulates parathyroid gland by inhibiting thyroid. Refreshing, astringent, increase muscle tone. Facilitates intuition.



# THE STUDY

**A special chromo puncture pen with the seven colors red, blue, yellow, green, orange, purple and turquoise the same wavelength highest intensity**

**The color used:**

**TCVM exams,**

**Typology**

**Symptoms**

**yellow color has been used for digestive problems as recommended by Mandel and purple blue and turquoise in behavioral disease Shen**



# HOW TO USE

**We have different ways to use the chromo therapy:**

**Always like Mendel every Back Shu and MU points has a couple complementary colors**

**Used the color according to hot- warm- cold – neutral energy for tone or disperse the points**

**Used according the color action**

**Auricular acupuncture**

**Other ways to use the light color in the animal's room. For example violet for relax or yellow for digestive problems**



**According to traditional Chinese medicine (TCM) every organism's energetic balance is based on the *Yin-Yang* relationship, and in the case of a disharmony we have excess or deficiency of *Qi*. With the colors we can invigorate or dissipate energy, trying to rebalance:  
if the energy imbalance was *Yin*, must use a *Yang* color to reverse it.**



# CLINICAL CASES



<b>Clinical cases</b>	<b>Disease</b>	<b>Treatments</b>	<b>Conclusion</b>
Gigi	Dermatitis and Behavioral problems	11	✓
Caffè	Constipation	1	✓
Tigre	Dislocation Lumbosacral spine, pain and constipation	4	✓
Bianca	Behavioral problems	3	✓
Gemma	Behavioral problems	3	✓
Carlotta	Stud Tail	1	✓
Gigi	Hyperthyroidism Behavioral problems	12	✓
Giada	Behavioral problems	1	✓

Clinical cases	Disease	Treatments	Conclusion
Merlino	Fecal Incontinence and neurological bladder	4 (Acupuncture with Cromo)	✓
Blacky	Fecal incontinence and constipations	6 (Acupuncture and Cromo)	✓



# GIGI

***Sex:*** castrated male

***Age:*** 2 yo

***Breed:*** European

***disease:*** atopic dermatitis



# GIGI STORY



Large skin scratching injury above ears, neck and legs

Rescue cat 02/14/2016 whit rhino- tracheitis and flea, scared, doesn't want to cuddle

*therapy:* 3/2016 started antibiotics and antiparasitic. Gigi wearied an Elizabethan collar for a one month, after he started scratching a lot especially on the head and neck

4-2016 change food with hypoallergenic food and used herbal Valerian to quiet

5-2016 not responsive and the skin lesion very important, decided to made corticosteroid; a little relief of symptoms, but Gigi licking in obsessive way

6-2016 Ribes Nigrum

7-2016 started **Chromo therapy**



# TCVM VISIT

## ZHEN DUAN

### ■ INSPECTION WANG

- *Shen*: good
- Tongue : pale, dry
- Skin : important skin lesion , greasy hair



### ■ QUESTIONS WEN

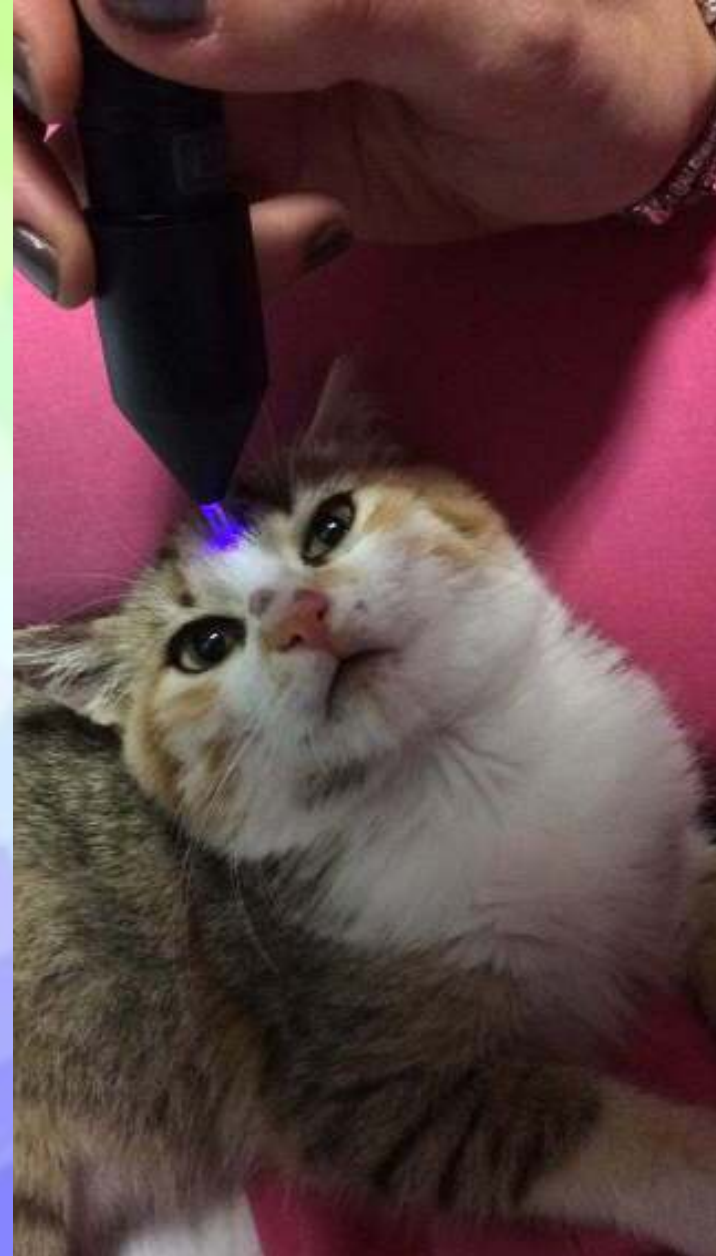
- Live at home
- Typology: Water. scary, anxious
- Food: mix dry and wet food

### ■ PALPATION QIE:

- Important skin lesions on neck ears foot and tail
- Back *Shu*: BL-23 very reactive, (the cat bit). BL-13 e BL-15 empty
- Pulse: slowly deep



- **TCVM Diagnosis: BA-GANG**
- Inside, empty, not true hot, yin deficiency
- **TCVM Pattern:**
- No balance Heart-kidney, *Chao-yin* level; the Child *Liver* doesn't move and Mather *Lung* doesn't produce *Wei Qi*
- **TCVM treatment:**
- balance Kidney Heart and Lung



## Points used and function

<b>BL-13 Fei Shu</b>	Back Shu association Lung point Yin deficiency
<b>BL-23 Shen Shu</b>	Back Shu association kidney point Yin and Qi deficiency
<b>BL-15 Xin Shu</b>	Back Shu association heart point sleep disorder, Shen disturbance, cognitive dysfunction
<b>GV-20 Bai Hui</b>	Sedation point , Shen disturbance
<b>BL-42 Po-Hu</b>	Lung Shen
<b>PC- 6 Nei Guan</b>	Shen disturbance , sleep disorder,
<b>BL-44 Shen Tang</b>	Heart Shen
<b>BL-52 Zhi Shi</b>	Kidney Shen

# THERAPY



4/07/2016 1 <sup>^</sup> day	<b>tongue</b>	<b>pale</b>
	<b>pulse</b>	<b>deep, thready</b>
	<b>Back Shu</b>	<b>BL-23 pain, BL-13 e BL-15 empty</b>
	<b>Therapy</b>	<b>GV- 20 blue to relieve cat Shen BL-23 blue for pain and tone kidney BL-13, BL-15 orange for points empty and BL-42 for Po LI-11 Blue wind sedative.</b>
	<b>Follow up</b>	<b>Gigi remain stable skin lesions are the same no more no less , but started meowing at night</b>

11/07/2016 2 <sup>^</sup> visit	<b>tongue</b>	<b>Pale</b>
	<b>pulse</b>	<b>Deep and thready</b>
	<b>Back Shu</b>	<b>BL-23pain , BL-13, BL-15 empty</b>
	<b>therapy</b>	<b>GV-20 blue to relieve cat Shen BL-23 blue for pain and tone kidney , BL -13, BL-15 orange for points empty and BL-42 for Po, PC-6 red for Shen</b>
	<b>Follow up</b>	<b>Gigi stopped to meowing for 7 night</b>

18/07/2016  
3^ visit

**tongue**

**Pale**

**pulse**

**Deep and thready**

**Back Shu**

**BL-23 pain , BL-13 BL-15 empty**

**therapy**

**GV-20 blue to relieve cat Shen  
BL-23 blue for pain and tone  
kidney  
BL-13, BL-15 orange for points  
empty and BL-42 for Po,  
PC-6 red for Shen**

**Follow up**

**Gigi stopped to meowing and  
better the skin lesion**

25/07/2016  
4^ visit

**tongue**

**Pale**

**pulse**

**Deep and thready**

**Back Shu**


**BL-23 empty BL-13 e BL-15  
empty**

**therapy**

**GV-20 blue to relieve cat  
Shen  
BL-23 blue for pain and  
tone kidney  
, BL-13, BL-15 orange for  
points empty and BL-42 for  
Po,  
PC-6 red for Shen**

**Follow up**

**Gigi feel better , no anxious  
and owner massage at  
home BL-23 to tone**

5^ visit 12/09/2016 	<b>tongue</b>	<b>Pale</b>
	<b>pulse</b>	<b>Deep and thready</b>
	<b>Back Shu</b>	<b>BL -13 BL -15 REACTIVE</b>
	<b>therapy</b>	<b>GV-20, BL-23 KID-7 blue calm Shen PC-6 red for Shen</b>
	<b>Follow up</b>	<b>Gigi started meowing at 5 AM and owner have get up</b>

19/09/2016 6^ visit	<b>tongue</b>	<b>Pale</b>
	<b>pulse</b>	<b>Deep and thready</b>
	<b>Back Shu</b>	<b>BL-13 e BL-15 REACTIVE</b>
	<b>therapy</b>	<b>42-BL, 52-BL, 23 BL,- GV-20 blue for Shen (Po and Zhi) and for pain at KID</b>
	<b>Follow up</b>	<b>Gigi started meowing at 5 AM and owner have get up</b>

26/09/2016 7^ visit	<b>tongue</b>	<b>Pink</b>
	<b>pulse</b>	<b>Deep and wiry</b>
	<b>Back Shu</b>	<b>BL-13 e BL-15 REACTIVE</b>
	<b>therapy</b>	<b>BL-42, BL-13, BL-15, GV-20 BL-44 in blue ; PC-6 orange</b>
	<b>Follow up</b>	<b>Gigi wakes up , but falls back to sleep</b>

03/10/2016 8^ visit	<b>tongue</b>	<b>Pale</b>
	<b>pulse</b>	<b>Deep and thready</b>
	<b>Back Shu</b>	<b>BL -13 e BL-15 REACTIVE</b>
	<b>therapy</b>	<b>BL-42, B-13, BL -15. GV-20 BL-44 in blue ; PC-6 orange</b>
	<b>Follow up</b>	<b>Gigi wakes up, but falls back to sleep. Find urine</b>





24/10/2016 9^ visit	<b>tongue</b>	1
	<b>pulse</b>	1
	<b>Back Shu</b>	1
	<b>therapy</b>	1 2 1 C C
	<b>Follow up</b>	C

07/11/2016 10^ visit	<b>tongue</b>	<b>Pale</b>
	<b>pulse</b>	<b>Superficial</b>
	<b>Back Shu</b>	<b>BL-13 e BL-15 normal</b>
	<b>therapy</b>	<b>BL-42, BL-13, BL-15, GV-20 BL-44 in blue ; PC 6 orange</b>
	<b>Follow up</b>	<b>Gigi feel good don't weak up</b>



15/11/2016 11^ visit  www.robortapozzi.com	<b>tongue</b>	<b>Pale</b>
	<b>pulse</b>	<b>Superficial</b>
	<b>Back Shu</b>	<b>BL-13 e BL-15 normal</b>
	<b>therapy</b>	<b>BL-42, BL-13, BL-23, BL-52 violet is color to balance PC-6 orange Violet light at home</b>
	<b>Follow up</b>	<b>Gigi feel good</b>



RED MAGE  
Tertiary

# CONCLUSION

- In all Chromo treated patients, we achieved relief the clinical signs. The Chromo acupuncture therapy has been shown to be a very good treatment sometimes similar to Acupuncture. Acupuncture remains the first choice, but whenever is hard to use acupuncture, chromo therapy is easier to apply. Is a not –invasive treatment so it is easy to do in aggressive patients. It is possible to combine the two treatment to have an increased effect.
- We have noticed that cats are more responsive compared dogs, especially when there is a behavioral problem. This is probably because the cats are more sensitive to light color than dogs and/ or maybe because we have used chromo therapy more often in cats , which are more difficult to needle.

# REFERENCES

- [1. http://www.scuolatao.com/corsi\\_agopuntura\\_tuina\\_mtc/images/tesi/AGO\\_2014\\_tesi\\_Passarini](http://www.scuolatao.com/corsi_agopuntura_tuina_mtc/images/tesi/AGO_2014_tesi_Passarini)
- [2. www.socialdogcat.com/it/benessere/come-vedono-i-cani-e-gatti.html](http://www.socialdogcat.com/it/benessere/come-vedono-i-cani-e-gatti.html)
- **3. Peter Mandel “Manuale pratico di Cromopuntura” ed. Tecniche Nuove, 2000**
- **4. Fritz Albert Popp “Nuovi orizzonti in medicina. La teoria dei biofotoni” ed. Nuova Ipsa, 2003**

# THANKS

